

Application Network Readiness Service

Proactive application deployment planning, troubleshooting, and analysis

Today's enterprises rely heavily on networked applications to conduct business and communicate with their customers. However, complaints about poorly performing applications are common, and the time to resolve such problems can extend for months, years, or even indefinitely. New application deployments are also frequently hindered by performance problems.

Performance of networked applications depends on complex interactions among applications, servers, and networks. **IT organizations need a detailed, quantitative understanding of these interactions to efficiently and cost-effectively troubleshoot and deploy applications. OPNET's Application Network Readiness Service directly addresses these challenges.**

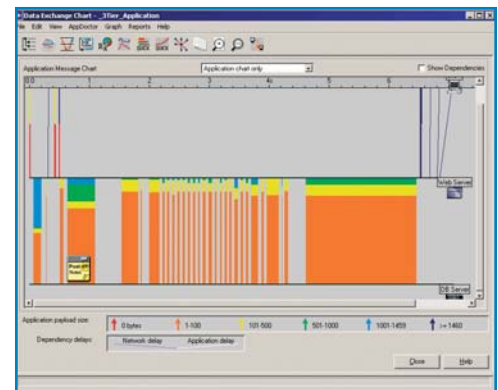
OPNET's Professional Service will help:

- Improve application response time
- Reduce infrastructure costs
- Minimize application downtime
- Enhance user productivity

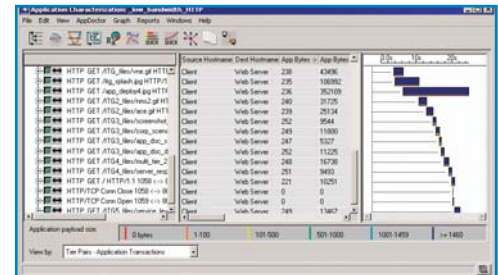
OPNET can predict the end-to-end performance of new applications before they are deployed on a network, as well as troubleshoot current applications that are experiencing performance problems or not meeting service level agreements (SLAs). OPNET uses its Application Characterization Environment (ACE) methodology to determine application response time and isolate poor performance due to network, server, or application coding problems.

By using application capture agents to collect detailed transaction data, OPNET analyzes the cause of any delays and recommends enhancements to improve response time. Our unique methodology isolates performance problems caused by latency, insufficient bandwidth, protocol congestion, incorrect TCP window sizes, application inefficiencies or chattiness, and server processing.

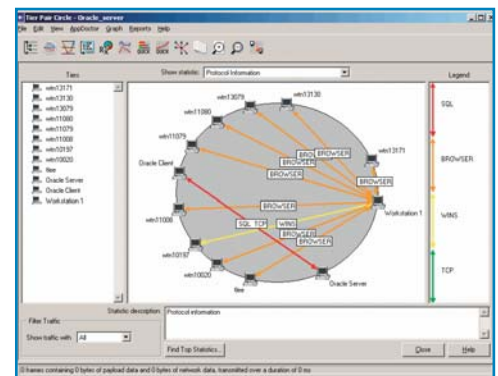
At the conclusion of a project, OPNET provides a detailed network analysis and application report with easy-to-understand explanations and specific recommendations.



Application message exchange diagram



Tier pair connections during a transaction



Total application message bytes among tiers

For more information and a price quote, please contact:

Frank Longo • Email: flongo@opnet.com • Phone: +1-240-497-3000 x 2713